

1994 - 2004 MUSTANG RACE CASTER/CAMBER PLATE INSTALLATION INSTRUCTIONS

P/N 340014

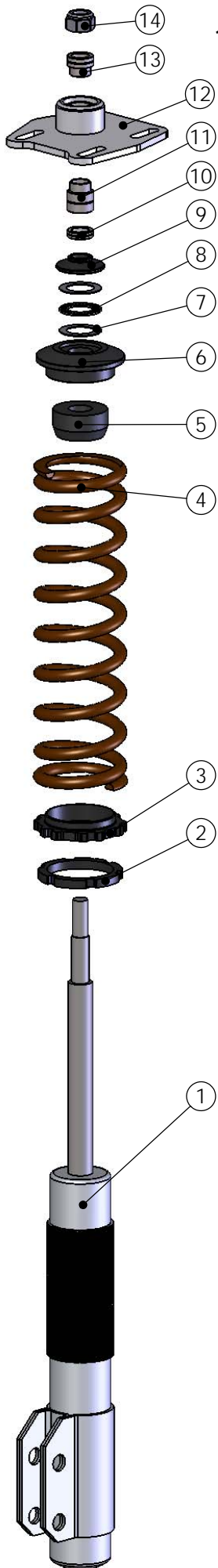
INSTALLATION:

1. Raise front of car with jack and support with jack stands.
2. Remove front wheels and disconnect sway bar end links.
3. Place jack under A-arm and raise up to compress spring and release tension on strut.
4. Remove upper strut retaining nut and lower jack to allow strut to drop beneath strut tower. Remove factory dust cover.
5. Remove strut mounting plates. You may need to drill out rivets on OEM upper plate.
6. Using new caster camber plate, align with factory slots in the most positive camber position. (Towards outside of vehicle.)
7. Mark the 4th stud location in the most positive camber location of the slot. (Closest to center of vehicle.)
8. Center punch and drill hole with 13/32" drill bit.
9. Raise A-arm with jack until shaft is ~2" through the strut tower hole.

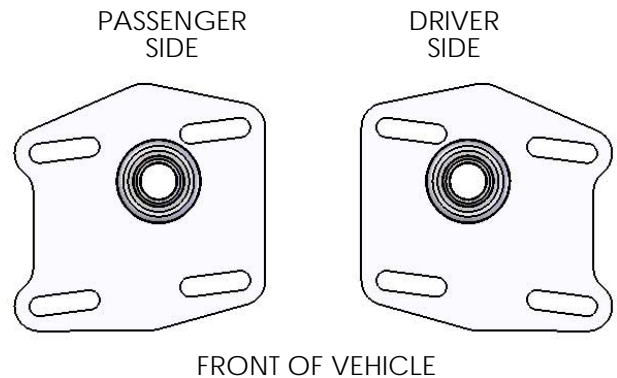
Two different stepped strut spacers are included to optimize strut travel for most applications. Spacers should be positioned so the strut is close to being centered in its travel at ride height. This can be checked by measuring the compressed and extended lengths of the strut and comparing this average to the position of the strut at ride height. Stock applications use the longer spacer (11) on bottom and shorter (13) on top. For most applications with a lower than stock ride height the short spacer should be placed on bottom with the long spacer on top. Check for adequate hood clearance after installation.

10. Install Racecraft Inc. caster camber plate assemblies on struts as shown below. If coil over springs are not being utilized slide the non-step spacer (10) onto the shaft, otherwise slide desired lower step spacer onto strut shaft and insert shaft into bearing. Slide upper step spacer on shaft and tighten strut retaining nut. Make sure spacers are properly inserted into spherical bearing!
11. Adjust jack height so plate is resting on the strut tower. Loosely install hardware.
12. Position strut bearing in a neutral alignment position and tighten all hardware securely.
13. Reconnect sway bar end links and reinstall front wheels.

*** DO NOT DRIVE VEHICLE BEFORE BEING REALIGNED! ***



ITEM	DESCRIPTION	QTY
1	STRUT	1
2	ADJUSTING JAM NUT	1
3	SPRING SEAT NUT	1
4	12" COIL OVER SPRING	1
5	BUMP STOP	1
6	TOP SPRING SEAT	1
7	THRUST WASHER	2
8	THRUST BEARING	1
9	STRUT SEAT HAT	1
10	COILOVER SPACER	1
11	TALL STEP SPACER	1
12	CASTER CAMBER PLATE	1
13	SHORT STEP SPACER	1
14	STRUT NUT	1



Racecraft Inc.
www.racecraft.com