

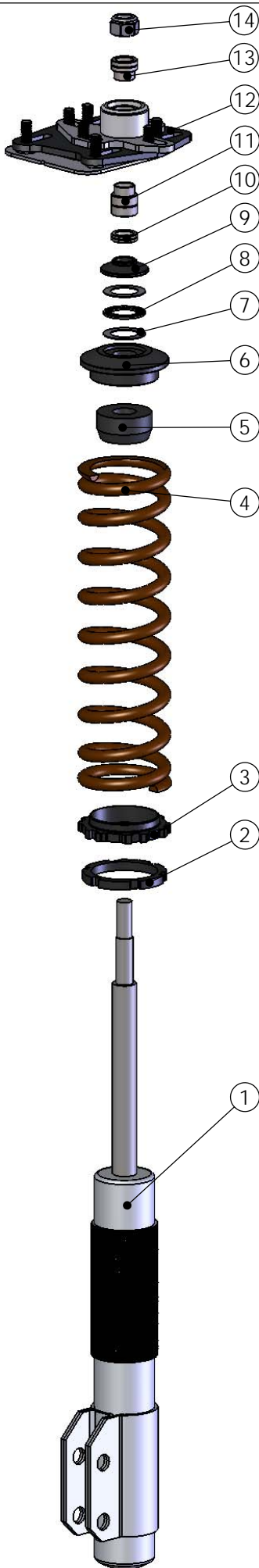
1994 - 2004 MUSTANG CASTER/CAMBER PLATE INSTALLATION INSTRUCTIONS

P/N 340012

INSTALLATION:

1. Raise front of car with jack and support with jack stands.
 2. Remove front wheels and disconnect sway bar end links.
 3. Place jack under A-arm and raise up to compress spring and release tension on strut.
 4. Remove upper strut retaining nut and lower jack to allow strut to drop beneath strut tower. Remove factory dust cover.
 5. Remove strut mounting plates. You may need to drill out rivets on OEM upper plate.
 6. Using new caster camber main plate, align with factory slots in the most positive caster and camber position. (Towards outside and back of vehicle.)
 7. Mark the 4th stud location in the most positive caster location of the slot. (Closest to front of vehicle.)
 8. Center punch and drill hole with 13/32" drill bit.
 9. From below, insert stud plate through strut tower slots and newly drilled hole.
 10. Guide strut shaft through stud plate and raise A-arm with jack until strut shaft is ~2" through the strut tower hole.
- Two different stepped strut spacers are included to optimize strut travel for most applications. Spacers should be positioned so the strut is close to being centered in its travel at ride height. This can be checked by measuring the compressed and extended lengths of the strut and comparing this average to the position of the strut at ride height. Stock applications use the longer spacer (11) on bottom and shorter (13) on top. For most applications with a lower than stock ride height the short spacer should be placed on bottom with the long spacer on top. Check for adequate hood clearance after installation.
11. Install Racecraft Inc. caster camber plate assemblies on struts as shown below. If coil over springs are not being utilized slide the non-step spacer (10) onto the shaft, otherwise slide desired lower step spacer onto strut shaft and insert shaft into bearing. Slide upper step spacer on shaft and tighten strut retaining nut. Make sure spacers are properly inserted into spherical bearing!
 12. Adjust jack height so the main plate is slightly above strut tower. Place thin spacers on top of strut tower over studs and loosely install hardware.
 13. Move plates through the full range of adjustment and check for tight spots. If tight spots exist, remove plates and open up strut tower slots with a file or die grinder
 14. Position strut bearing in a neutral alignment position and tighten all hardware securely.
 15. Reconnect the sway bar end links and reinstall front wheels.

*** DO NOT DRIVE VEHICLE BEFORE BEING REALIGNED! ***



ITEM	DESCRIPTION	QTY
1	STRUT	1
2	ADJUSTING JAM NUT	1
3	SPRING SEAT NUT	1
4	12" COIL OVER SPRING	1
5	BUMP STOP	1
6	TOP SPRING SEAT	1
7	THRUST WASHER	2
8	THRUST BEARING	1
9	STRUT SEAT HAT	1
10	COILOVER SPACER	1
11	TALL STEP SPACER	1
12	CASTER CAMBER PLATE	1
13	SHORT STEP SPACER	1
14	STRUT NUT	1

